

Lower Weber Watershed Risk MAP Project

Weber County, UT Flood Study Update, Zone AE, May 18, 2021



FEMA

Review the preliminary map changes in FEMA's Map Changes Viewer

Preliminary flood hazard data (preliminary data) provide the public an early look at their home or community's flood hazard risk. Go to FEMA's Map Change Viewer to view effective data and preliminary changes side by side: [Preliminary Map Changes Viewer](#). Only the changes released April 21, 2021 are part of this revision study although the viewer may also show preliminary changes from other release dates as well. Individual panels as well as Flood Insurance Study reports and GIS data are available here: [Preliminary FEMA Map Products](#).

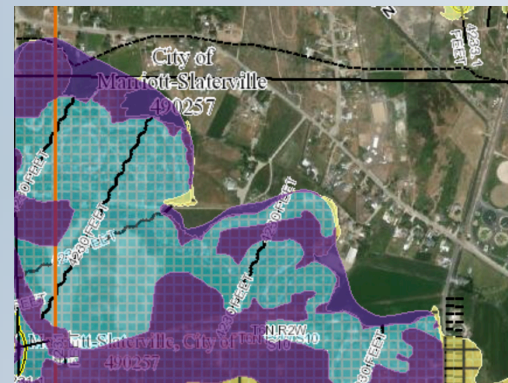
Instructions for using the Viewer

We have created an instruction sheet to help you navigate the Map Changes Viewer.

[Click here for the instruction sheet](#)

View the National Flood Hazard Layer

The National Flood Hazard Layer (NFHL) is a geospatial database that contains current effective flood hazard data for the entire country. It is online and available [HERE](#)



- Floodway Change
 - Floodway Increase
 - Floodway Decrease
- Special Flood Hazard Area Change
 - Special Flood Hazard Area Increase
 - Special Flood Hazard Area Decrease
- Non-Special Flood Hazard Area Change
 - Non-Special Flood Hazard Area Increase
 - Non-Special Flood Hazard Area Decrease

Protect your home and property

The National Flood Insurance Program is a voluntary program that communities can join to offer affordable insurance to their constituents. Choosing to participate requires these communities to agree to specific development and construction standards designed to minimize risk from flooding. Please visit the [FloodSmart site](#) to find out about this program.

Mitigation assistance

Hazard mitigation is any sustainable action that reduces or eliminates long-term risk to people and property from future disasters. Click [HERE](#) for Utah's State Mitigation Plan and [HERE](#) to read about FEMA's various hazard mitigation grant programs.

Still have questions? See your local floodplain manager for assistance.